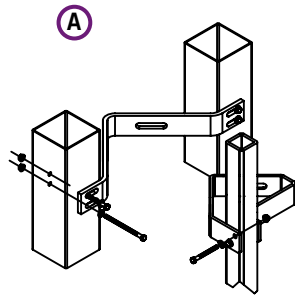
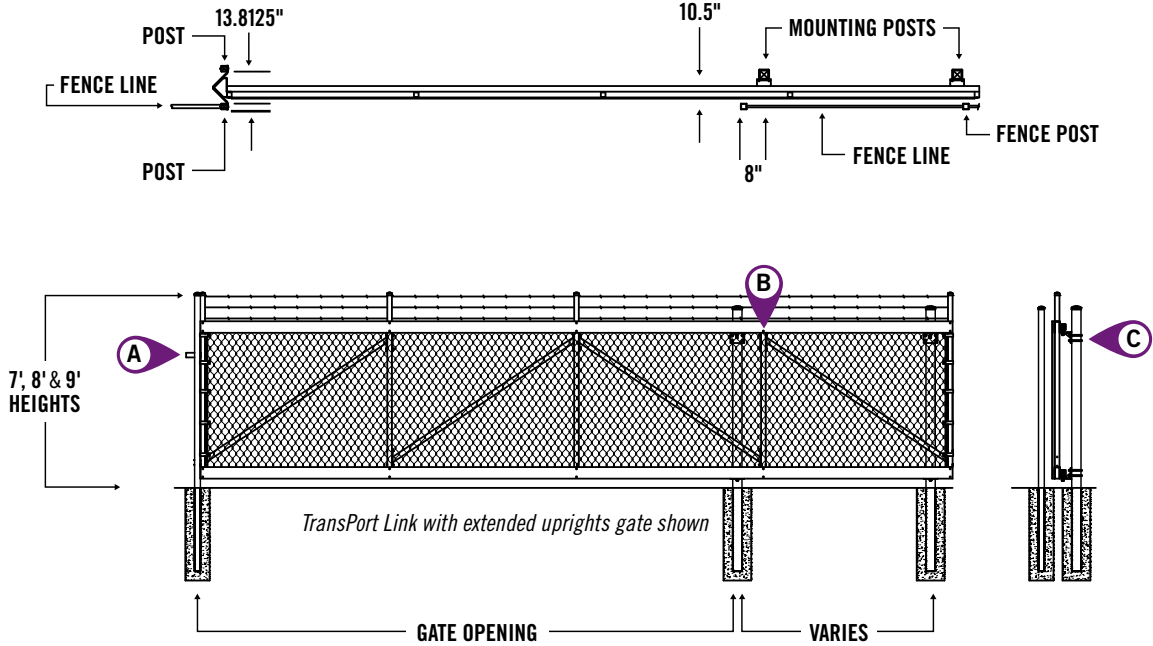


TRANSPORT LINK® | CHAIN LINK CANTILEVER GATES

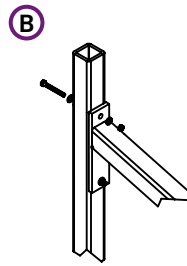
2"sq x .25" UPRIGHTS & DIAGONAL BRACES | GATE TRACKS PRE-DRILLED FOR LEFT OR RIGHT OPENINGS

***GATE FABRIC MESH & BARBED WIRE ARE NOT INCLUDED

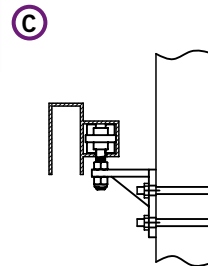
PATENT NUMBER: D609951



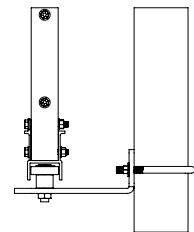
ISO VIEW



ISO VIEW



Top Track for all Gates
 Bottom Track for Gates > 24' opgs



Bottom Track for
 Gates < 24' opgs



CANTILEVER GATE SAFETY WARNING

Ornamental Cantilever Gates are supplied with rolls of 2" mesh safety screening in sufficient quantities to cover the entire gate (including overhang) and an equal portion of fence parallel to the gate in the open position up to a height of over 6' from ground elevation. **This screening must be included when the TransPort Gate is assembled at the job site.** Additionally, all of the safety requirements of ASTM F2200 must be met during installation. **Failure to incorporate the safety mesh or follow ASTM F2200 safety requirements during gate assembly and installation will cause rejection of the entire gate system any time an attempt is made to attach the gate to an automatic gate operator. Ameristar assumes no responsibility for gate installations that fail to utilize the materials provided or meet the applicable safety standards.**

Refer to construction specification & tables within this section for more details.

Effective: 0/17/19

TRANSPORT LINK® | CHAIN LINK CANTILEVER GATES

FABRIC, GATE HARDWARE & POST NOT INCLUDED | NOT FOR BARBED WIRE APPLICATIONS | ASSEMBLY REQUIRED

	OPENING	LENGTH	ITEM NUMBER	WEIGHT	STOCKING
4' HEIGHT	6'-8'	144.5"	CT@04808R1	186 lbs	☉
	8'-10'	182.5"	CT@04810R1	224 lbs	☉
	10'-12'	211"	CT@04812R1	270 lbs	☉
	12'-14'	249"	CT@04814R1	307 lbs	☉
	14'-16'	287"	CT@04816R1	344 lbs	☉
	16'-18'	325"	CT@04818R1	381 lbs	☉
	18'-20'	372.5"	CT@04820R1	451 lbs	☉
	20'-22'	401"	CT@04822R1	487 lbs	☉
	22'-24'	429.5"	CT@04824R1	512 lbs	☉
	24'-27' Dual	496"	CT@04827	606 lbs	☉
27'-30' Dual	534"	CT@04830	643 lbs	☉	
5' HEIGHT	6'-8'	144.5"	CT@06008R1	194 lbs	☉
	8'-10'	182.5"	CT@06010R1	231 lbs	☉
	10'-12'	211"	CT@06012R1	284 lbs	☉
	12'-14'	249"	CT@06014R1	321 lbs	☉
	14'-16'	287"	CT@06016R1	358 lbs	☉
	16'-18'	325"	CT@06018R1	395 lbs	☉
	18'-20'	372.5"	CT@06020R1	471 lbs	☉
	20'-22'	401"	CT@06022R1	507 lbs	☉
	22'-24'	429.5"	CT@06024R1	532 lbs	☉
	24'-27' Dual	496"	CT@06027	632 lbs	☉
27'-30' Dual	534"	CT@06030	669 lbs	☉	
6' HEIGHT	6'-8'	144.5"	CT@07208R1	202 lbs	☉
	8'-10'	182.5"	CT@07210R1	239 lbs	☉
	10'-12'	211"	CT@07212R1	299 lbs	☉
	12'-14'	249"	CT@07214R1	336 lbs	☉
	14'-16'	287"	CT@07216R1	372 lbs	☉
	16'-18'	325"	CT@07218R1	409 lbs	☉
	18'-20'	372.5"	CT@07220R1	493 lbs	☉
	20'-22'	401"	CT@07222R1	528 lbs	☉
	22'-24'	429.5"	CT@07224R1	553 lbs	☉
	24'-27' Dual	496"	CT@07227	660 lbs	☉
27'-30' Dual	534"	CT@07230	697 lbs	☉	



7' & 8' HEIGHTS ON NEXT PAGE

Note: All TransPort gates over 24' opening are Dual Track Systems & include a horizontal stabilizer arm

Effective: 0/17/19

TRANSPORT LINK® | CHAIN LINK CANTILEVER GATES

FABRIC, GATE HARDWARE & POST NOT INCLUDED | NOT FOR BARBED WIRE APPLICATIONS | ASSEMBLY REQUIRED

	OPENING	LENGTH	ITEM NUMBER	WEIGHT	STOCKING
7' HEIGHT	6'-8'	144.5"	CTⓉ08408R1	211 lbs	Ⓣ
	8'-10'	182.5"	CTⓉ08410R1	247 lbs	Ⓣ
	10'-12'	211"	CTⓉ08412R1	315 lbs	Ⓣ
	12'-14'	249"	CTⓉ08414R1	351 lbs	Ⓣ
	14'-16'	287"	CTⓉ08416R1	387 lbs	Ⓣ
	16'-18'	325"	CTⓉ08418R1	424 lbs	Ⓣ
	18'-20'	372.5"	CTⓉ08420R1	515 lbs	Ⓣ
	20'-22'	401"	CTⓉ08422R1	550 lbs	Ⓣ
	22'-24'	429.5"	CTⓉ08424R1	575 lbs	Ⓣ
		24'-27' Dual	496"	CTⓉ08427	689 lbs
	27'-30' Dual	534"	CTⓉ08430	725 lbs	Ⓣ
8' HEIGHT	6'-8'	144.5"	CTⓉ09608R1	220 lbs	Ⓣ
	8'-10'	182.5"	CTⓉ09610R1	256 lbs	Ⓣ
	10'-12'	211"	CTⓉ09612R1	332 lbs	Ⓣ
	12'-14'	249"	CTⓉ09614R1	367 lbs	Ⓣ
	14'-16'	287"	CTⓉ09616R1	403 lbs	Ⓣ
	16'-18'	325"	CTⓉ09618R1	439 lbs	Ⓣ
	18'-20'	372.5"	CTⓉ09620R1	538 lbs	Ⓣ
	20'-22'	401"	CTⓉ09622R1	573 lbs	Ⓣ
	22'-24'	429.5"	CTⓉ09624R1	597 lbs	Ⓣ
		24'-27' Dual	496"	CTⓉ09627	719 lbs
	27'-30' Dual	534"	CTⓉ09630	755 lbs	Ⓣ



Ⓣ = **COLOR OPTIONS AVAILABLE** | **U** = Uncoated | **B** = Black | **N** = Tube Brown | **G** = Tube Green

Ⓣ = **NON-STOCKED PRODUCT**

For details, see Ameristar's Sales Policy in the catalog guide.

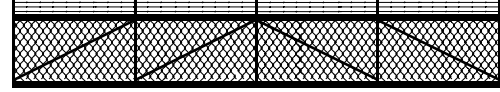
Note: All TransPort gates over 24' opening are Dual Track Systems & include a horizontal stabilizer arm

Effective: 0/17/19

TRANSPORT LINK® | CHAIN LINK CANTILEVER GATES W/ EXTENDED UPRIGHTS

BARBED WIRE, FABRIC, GATE HARDWARE & POST NOT INCLUDED | FOR BARBED WIRE APPLICATIONS | ASSEMBLY REQUIRED

	OPENING	LENGTH	ITEM NUMBER	WEIGHT	STOCKING
7' (6'+1') HEIGHT	6'-8'	144.5"	CT⊗08408-BWR1	202 lbs	⊙
	8'-10'	182.5"	CT⊗08410-BWR1	239 lbs	⊙
	10'-12'	211"	CT⊗08412-BWR1	299 lbs	⊙
	12'-14'	249"	CT⊗08414-BWR1	336 lbs	⊙
	14'-16'	287"	CT⊗08416-BWR1	372 lbs	⊙
	16'-18'	325"	CT⊗08418-BWR1	409 lbs	⊙
	18'-20'	372.5"	CT⊗08420-BWR1	493 lbs	⊙
	20'-22'	401"	CT⊗08422-BWR1	528 lbs	⊙
	22'-24'	429.5"	CT⊗08424-BWR1	553 lbs	⊙
	24'-27' Dual	496"	CT⊗08427-BW	660 lbs	⊙
27'-30' Dual	534"	CT⊗08430-BW	697 lbs	⊙	
8' (7'+1') HEIGHT	6'-8'	144.5"	CT⊗09608-BWR1	211 lbs	⊙
	8'-10'	182.5"	CT⊗09610-BWR1	247 lbs	⊙
	10'-12'	211"	CT⊗09612-BWR1	315 lbs	⊙
	12'-14'	249"	CT⊗09614-BWR1	351 lbs	⊙
	14'-16'	287"	CT⊗09616-BWR1	387 lbs	⊙
	16'-18'	325"	CT⊗09618-BWR1	424 lbs	⊙
	18'-20'	372.5"	CT⊗09620-BWR1	515 lbs	⊙
	20'-22'	401"	CT⊗09622-BWR1	550 lbs	⊙
	22'-24'	429.5"	CT⊗09624-BWR1	575 lbs	⊙
	24'-27' Dual	496"	CT⊗09627-BW	689 lbs	⊙
27'-30' Dual	534"	CT⊗09630-BW	725 lbs	⊙	
9' (8'+1') HEIGHT	6'-8'	144.5"	CT⊗10808-BWR1	220 lbs	⊙
	8'-10'	182.5"	CT⊗10810-BWR1	256 lbs	⊙
	10'-12'	211"	CT⊗10812-BWR1	332 lbs	⊙
	12'-14'	249"	CT⊗10814-BWR1	367 lbs	⊙
	14'-16'	287"	CT⊗10816-BWR1	403 lbs	⊙
	16'-18'	325"	CT⊗10818-BWR1	439 lbs	⊙
	18'-20'	372.5"	CT⊗10820-BWR1	538 lbs	⊙
	20'-22'	401"	CT⊗10822-BWR1	573 lbs	⊙
	22'-24'	429.5"	CT⊗10824-BWR1	597 lbs	⊙
	24'-27' Dual	496"	CT⊗10827-BW	719 lbs	⊙
27'-30' Dual	534"	CT⊗10830-BW	755 lbs	⊙	



TRANSPORT LINK™ WITH EXTENDED UPRIGHTS

⊗ = COLOR OPTIONS AVAILABLE | U = Uncoated B = Black N = Tube Brown G = Tube Green

⊙ = NON-STOCKED PRODUCT

For details, see Ameristar's Sales Policy in the catalog guide.

Note: All TransPort gates over 24' opening are Dual Track Systems & include a horizontal stabilizer arm

Effective: 0/17/19

AMERISTAR

ASSA ABLOY

TO PLACE YOUR ORDER CALL 888-333-3422 | VISIT AMERISTARFENCE.COM

TRANSPORT LINK® | SINGLE TRACK CANTILEVER GATE HARDWARE

6'-8' opening thru 22'-24' opening are single track systems

DESCRIPTION	ITEM NUMBER	BOX QTY	WEIGHT
4" Round Post Gate Kit	TGKCSN1	1	80
6.625" Round Post Gate Kit	TGKCS-6N1	1	91

Kits include: (2) Truck Assemblies / 6-wheel | (2) Truck Brackets / U-Bolts 4" or 6.625" sq. per kit size | (1) Cantilever Gate Latch / Yolk & Receiver | (2) Gate Stops | (2) Bottom Roller Assemblies

DESCRIPTION	ITEM NUMBER	BOX QTY	WEIGHT
4" Round Post Bi-Parting Gate Kit	TGKCSB	1	80

Kits include: (4) Truck Assemblies / 6-wheel | (4) Truck Brackets / U-Bolts 4" sq. per kit size | (1) Gate Latch | (4) Gate Stops | (4) Bottom Roller Assemblies

Note: 4" sq. x 11ga. Minimum post size required for cantilever gate installations.

TRANSPORT LINK® | DUAL TRACK CANTILEVER GATE HARDWARE

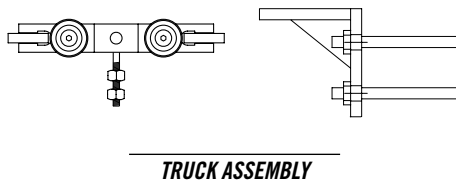
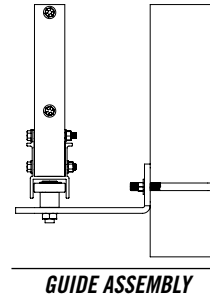
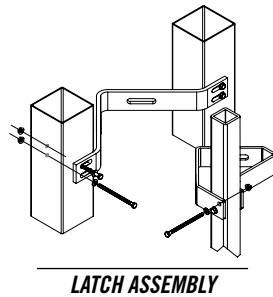
24'-27' opening & 27'-30' opening are dual track systems

DESCRIPTION	ITEM NUMBER	BOX QTY	WEIGHT
4" Round Post Gate Kit	TGKCDN1	1	80
6.625" Round Post Gate Kit	TGKCD-6N1	1	90

Kits include: (4) Truck Assemblies / 6-wheel | (4) Truck Brackets / U-Bolts 4" or 6" sq. per kit size | (2) Cantilever Gate Latch / Yolk & Receiver | (2) Gate Stops

DESCRIPTION	ITEM NUMBER	BOX QTY	WEIGHT
4" Round Post Bi-Parting Gate Kit	TGKCDB	1	80

Kits include: (8) Truck Assemblies / 6-wheel | (8) Truck Brackets / U-Bolts 4" sq. per kit size | (1) Gate Latch | (4) Gate Stops



Effective: 0/17/19

TRANSPORT LINK® | CONSTRUCTION SPECIFICATION 32 31 00

ENGINEERED CANTILEVER GATE SYSTEM

PART 1 - GENERAL

1.01 WORK INCLUDED

The contractor shall provide all labor, materials and appurtenances necessary for installation of the chain link cantilever gate system defined herein at (*specify project site*).

1.02 RELATED WORK

Section ____ - Earthwork

Section ____ - Concrete

1.03 SYSTEM DESCRIPTION

The manufacturer shall supply a total high security cantilever gate system of the Ameristar® TransPort Link® (*specify with barb-wire extension or without barb-wire extension*) design. The system shall include all components (*i.e., tracks, uprights, bracing, hardware, fittings, and fasteners*) required.

1.04 QUALITY ASSURANCE

The contractor shall provide laborers and supervisors who are thoroughly familiar with the type of construction involved and materials and techniques specified.

1.05 REFERENCES

- **ASTM A653/A653M** – Standard Specification for Steel Sheet, Zinc-Coated (Galvanized) or Zinc-Iron Alloy Coated (Galvannealed) by the Hot-Dip Process
- **ASTM B117** – Practice for Operating Salt-Spray (Fog) Apparatus
- **ASTM B221** – Aluminum and Aluminum Alloy Extruded Bars, Shapes and Tubes
- **ASTM D523** – Test Method for Specular Gloss
- **ASTM D714** – Test Method for Evaluating Degree of Blistering in Paint
- **ASTM D1654** – Test Method for Evaluation of Painted or Coated Specimens Subjected to Corrosive Environments
- **ASTM D2244** – Test Method for Calculation of Color Differences from Instrumentally Measured Color Coordinates
- **ASTM D2794** – Test Method for Resistance of Organic Coatings to the Effects of Rapid Deformation (Impact)
- **ASTM D3359** – Test Method for Measuring Adhesion by Tape Test
- **ASTM D6695** – Standard Practice for Xenon-Arc Exposures of Paint and Related Coatings

1.06 SUBMITTAL

The manufacturer's submittal package shall be provided prior to installation.

1.07 PRODUCT HANDLING AND STORAGE

Upon receipt at the job site, all materials shall be checked to ensure that no damages occurred during shipping or handling. Materials shall be stored in such a manner to ensure proper ventilation and drainage, and to protect against damage, weather, vandalism and theft.

PART 2 - MATERIALS

2.01 MANUFACTURER

All chain link cantilever gates shall conform to the Ameristar TransPort Link gate system, (*specify with barb-wire extension or without barb-wire extension*) design, manufactured by Ameristar Perimeter Security Inc., in Tulsa, Oklahoma. The project gate schedule shall include the following additional information for each cantilever gate included in the project scope: (*specify nominal opening size in feet*) opening, (*specify nominal height in feet*) height, (*specify direction of gate travel to the open position, right or left, viewing from outside fence line looking in*) gate travel direction.

2.02 MATERIAL

- A. The materials used for cantilever gate framing (*uprights & diagonal bracing*) shall be manufactured from **ASTM B221** aluminum (*designation 6063-T-6*) with yield strength of 25,000 PSI, a tensile strength of 30,000 PSI and a standard mill finish. The TransPort enclosed tracks shall be manufactured from ASTM B221 aluminum (*designation 6063-T-6*) with yield strength of 25,000 PSI, a tensile strength of 30,000 PSI and a standard mill finish.
- B. Material for gate in-fill shall be chain link fabric meeting the wire mesh material and size specified for corresponding chain link fence.
- C. Material for gate uprights and diagonal bracing shall be 2" square x ¼" wall aluminum. The cross-sectional shape of the top and bottom enclosed-track shall conform to the manufacturers Fast-Trak™ design with as a single extrusion consisting of a 2" x 5" channeled support with integrated 2" x 2" enclosed-track raceway.
- D. Steel material for fence posts shall be galvanized prior to forming in accordance with the requirements of **ASTM A653/A653M**, with minimum yield strength of 45,000 psi (310 MPa). The steel shall be hot-dip galvanized to meet the requirements of **ASTM A653/A653M** with a minimum zinc coating weight of 0.90 oz/ft² (276 g/m²), Coating Designation G-90. Material for gate support posts shall be 4" square x 11 Ga. tubing.
- E. Suspension Rollers for top and bottom tracks shall be used at each support post to track connection. Each truck assembly shall be capable of being adjusted vertically via

Effective: 0/17/19

AMERISTAR

ASSA ABLOY

TO PLACE YOUR ORDER CALL 888-333-3422 | VISIT AMERISTARFENCE.COM

TRANSPORT LINK® | CONSTRUCTION SPECIFICATION 32 31 00

ENGINEERED CANTILEVER GATE SYSTEM

threaded rod for fine-tune adjustment. Truck assembly shall be constructed in a way so that the primary housing for the truck rollers shall pivot via ball-bearing connection to threaded rod.

2.03 FABRICATION

- A. Gate frame uprights and diagonal bracing shall be pre-fabricated and pre-punched to accept frame fasteners. Enclosed track shall be pre-punched to accept gate uprights. Posts shall be pre-cut to specified lengths.
- B. Enclosed track extrusions shall be mechanically fastened to vertical gate uprights and intermediate supports, as required by assembly instructions. Diagonal bracing shall be mechanically fastened to vertical gate uprights and intermediate supports, as required by assembly instructions. Chain link fabric shall be attached to gate uprights with tension-bands.
- C. The manufactured gate components shall be subjected to the Ameristar thermal stratification coating process (*high-temperature, in-line, multi-stage, and multi-layer*) including, as a minimum, a six-stage pretreatment/wash and an electrostatic spray application of a polyester finish. The topcoat shall be a “no-mar” TGIC polyester powder coat finish with a minimum thickness of 2 mils (0.0508mm). The color shall be (*specify Black, Bronze, White, or Desert Sand*). The stratification-coated framework shall be capable of meeting the performance requirements for each quality characteristic shown in **Table 1**.

PART 3 - EXECUTION

3.01 PREPARATION

All new installation shall be laid out by the contractor in accordance with the construction plans.

3.02 GATE INSTALLATION

- A. Cantilever support posts shall be set in concrete footers having a minimum depth of 48” (Note: In some cases, local

restrictions of freezing weather conditions may require a greater depth). The “Earthwork” and “Concrete” sections of this specification shall govern material requirements for the concrete footer. Posts setting by other methods such as plated posts or grouted core-drilled footers are permissible only if shown by engineering analysis to be sufficient in strength for the intended application.

- B. Gate to be installed per manufacturers gate installation instructions. Gate shall be installed in compliance with **ASTM F2200** standards.

3.03 GATE INSTALLATION MAINTENANCE

When cutting/drilling posts adhere to the following steps to seal the exposed steel surfaces; 1) Remove all metal shavings from cut area. 2) Apply zinc-rich primer to thoroughly cover cut edge and/or drilled hole; let dry. 3) Apply 2 coats of custom finish paint matching fence color. Failure to seal exposed surfaces per steps 1-3 above will negate warranty. Ameristar spray cans or paint pens shall be used to prime and finish exposed surfaces; it is recommended that paint pens be used to prevent overspray. Use of non-Ameristar parts or components will negate the manufactures’ warranty.

3.04 GATE INSTALLATION

Gate posts shall be spaced according to the manufacturers’ drawings, dependent on clear opening. The manufacturers’ gate drawings shall identify the necessary gate hardware required for the application. Gate hardware shall be provided by the manufacture of the gate and shall be installed per manufacturer’s recommendations.

3.05 CLEANING

The contractor shall clean the jobsite of excess materials; post-hole excavations shall be scattered uniformly away from posts.

TABLE 1

COATING PERFORMANCE REQUIREMENTS		
QUALITY CHARACTERISTICS	ASTM TEST METHOD	PERFORMANCE REQUIREMENTS
ADHESION	D3359 – METHOD B	Adhesion (<i>retention of coating</i>) over 90% of test area (<i>tape and knife test</i>).
CORROSION RESISTANCE	B117, D714, D1654	Corrosion resistance over 1,000 hours (<i>scribed per D1654; failure mode is accumulation of 1/8" coating loss from scribe or medium #8 blisters</i>)
IMPACT RESISTANCE	D2794	Impact resistance over 60" lb. (<i>forward impact using 0.625" ball</i>).
WEATHERING RESISTANCE	D822 D2244, D523 (60° method)	Weathering resistance over 1,000 hours (<i>failure mode is 60% loss of gloss or color variance of more than 3 delta-E color units</i>).

Effective: 0/17/19

Effective: 0/17/19