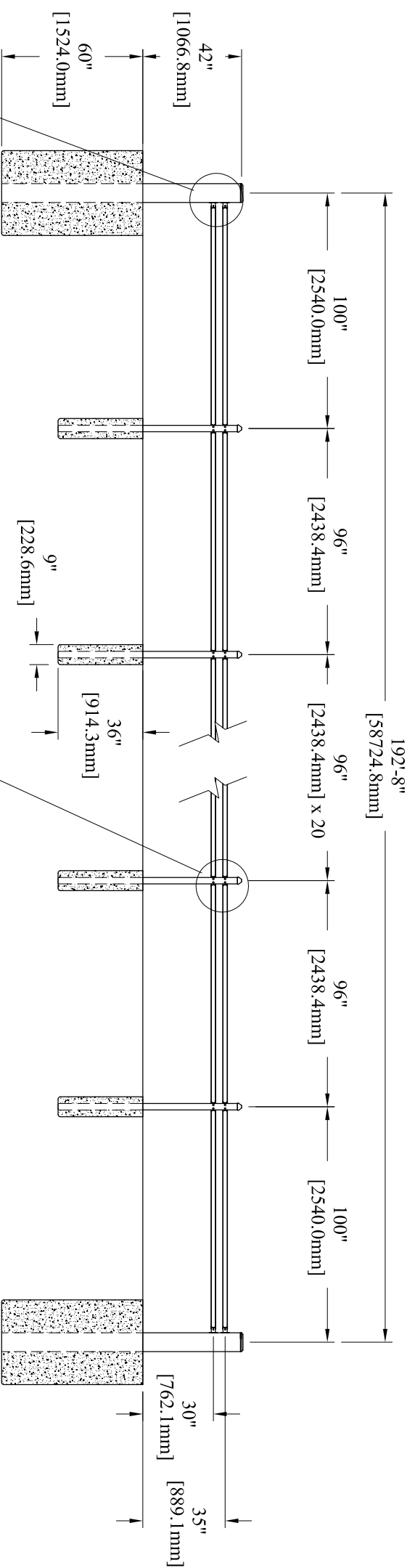
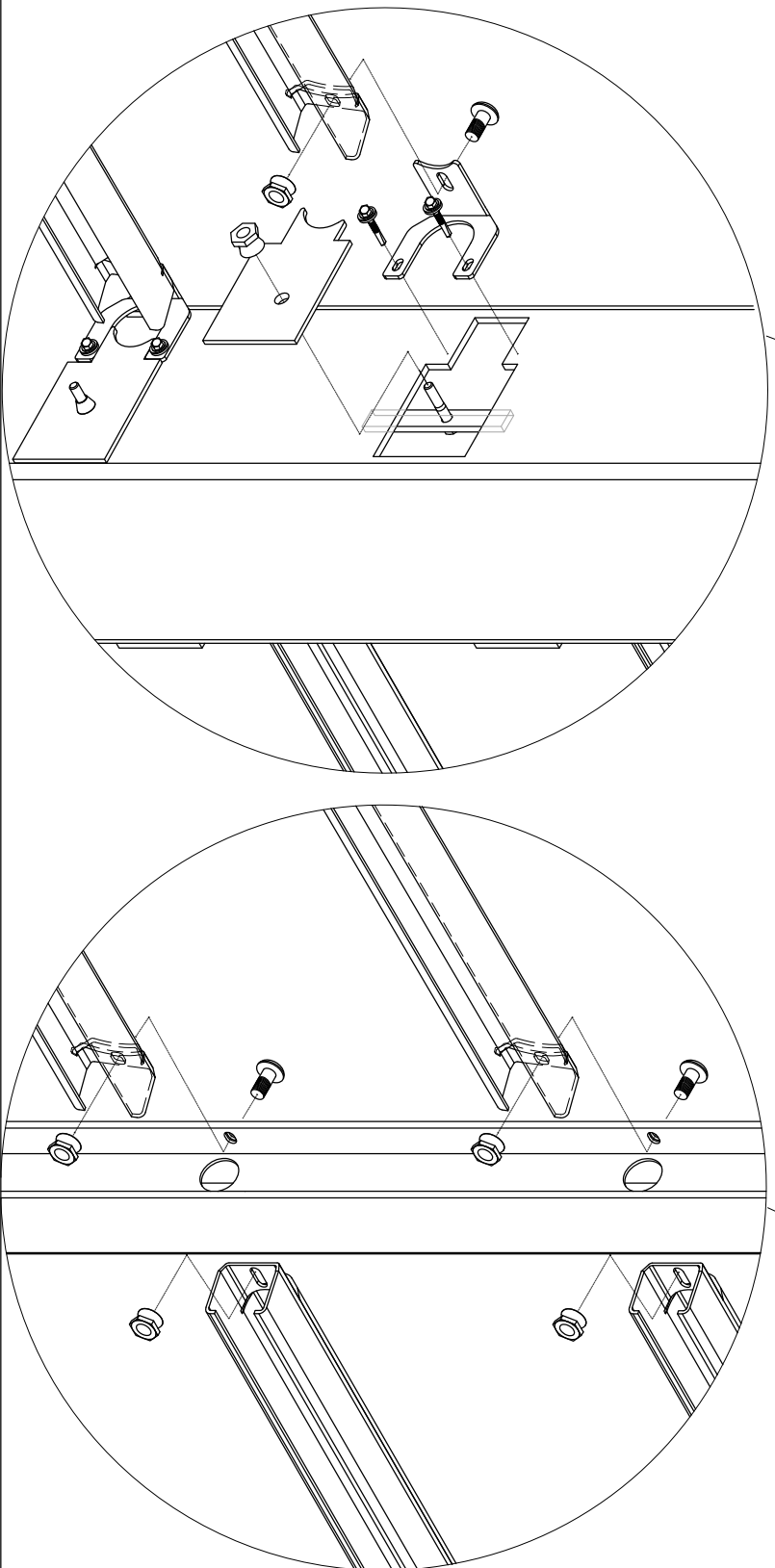


CABLE RUN ELEVATION



POST SPACING ELEVATION

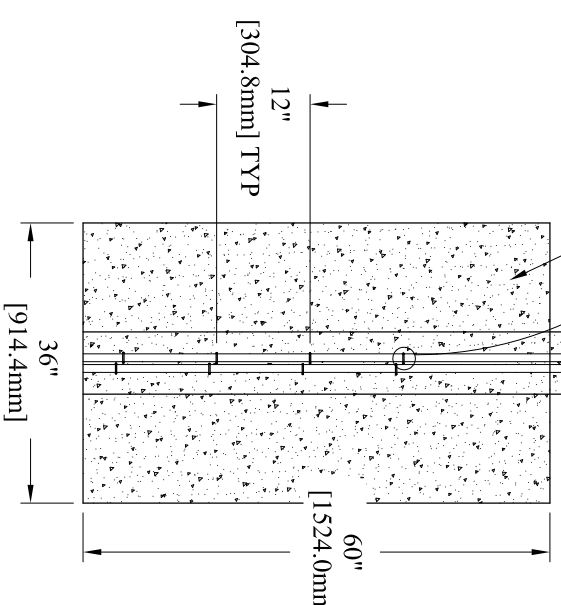


THE PU50-P2 SYSTEMS HAVE BEEN ENGINEERED TO COMPLY WITH THE IMPACT CONDITIONS AND PENETRATION DISTANCES SPECIFIED IN THE ASTM F2656 CLASSIFICATIONS.

FILL WITH 4,000 #psi CONCRETE (AFTER CABLES AND FASTENERS ARE INSTALLED)

4,000 #psi CONCRETE

BOLLARD DETAIL



UNLESS NOTED OTHERWISE		DO NOT SCALE		PROPRIETARY INFORMATION	
REV	ECN	AUTHOR	DATE	DESCRIPTION	REVISION HISTORY
C		KMC	05/05/2015	ADDED MM, PUT ON NEW PAGE LAYOUT	

1555 N. Mingo
Tulsa, OK 74116
1-888-933-9422
www.ameristarinc.com

TITLE: STALWART PU50 P2 POST AND RAIL

DATE: 05/05/2015

DRN BY: KMC

DRAWING NO: SPR-PS02WR

SHEET: 1 of 1

REV: C