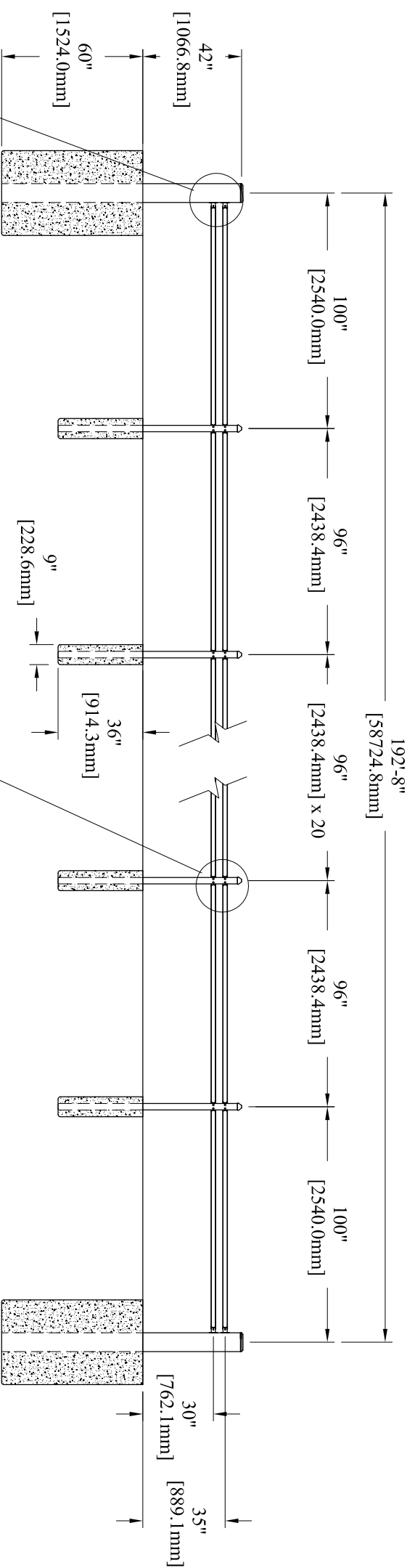
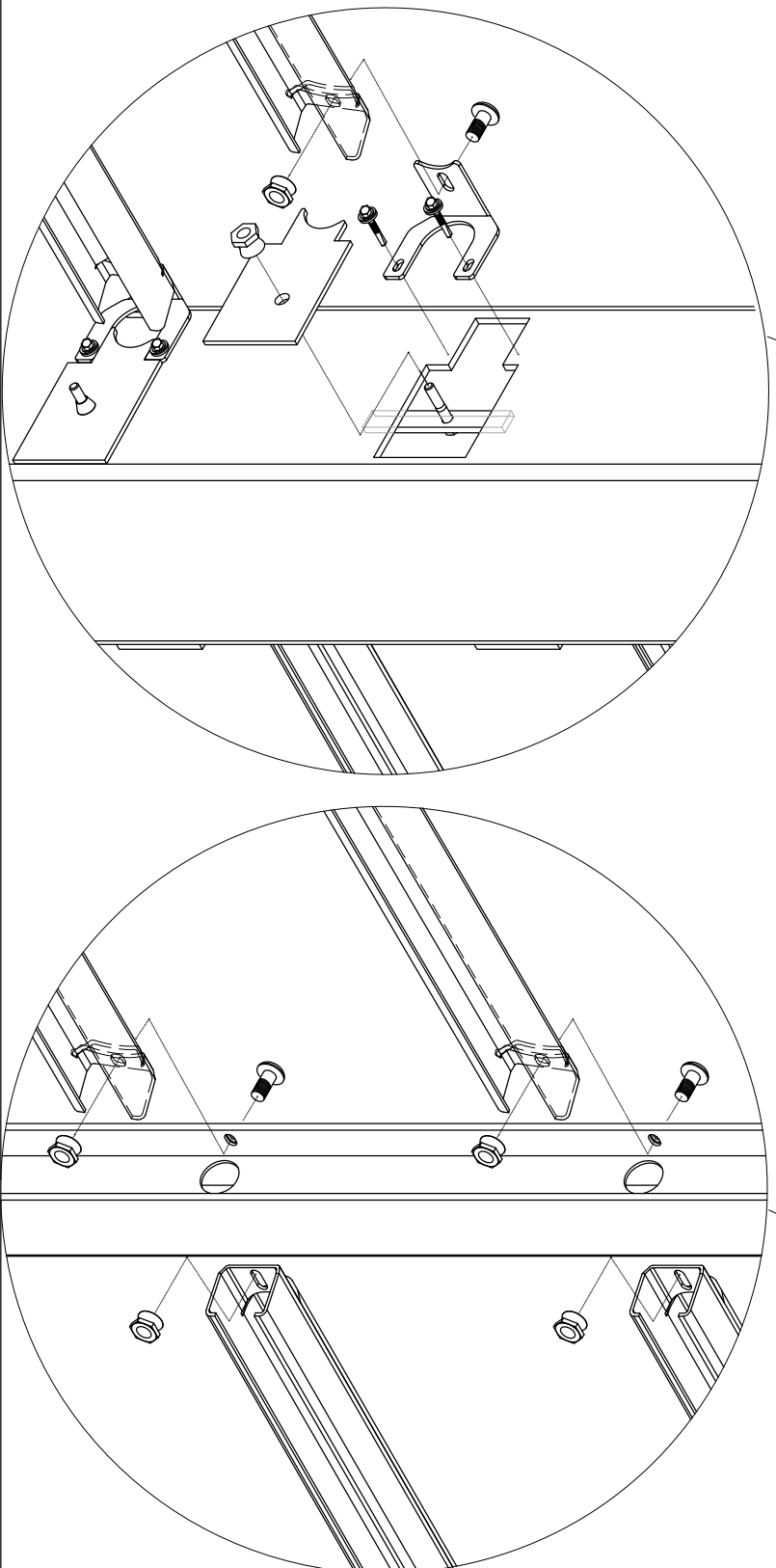


CABLE RUN ELEVATION



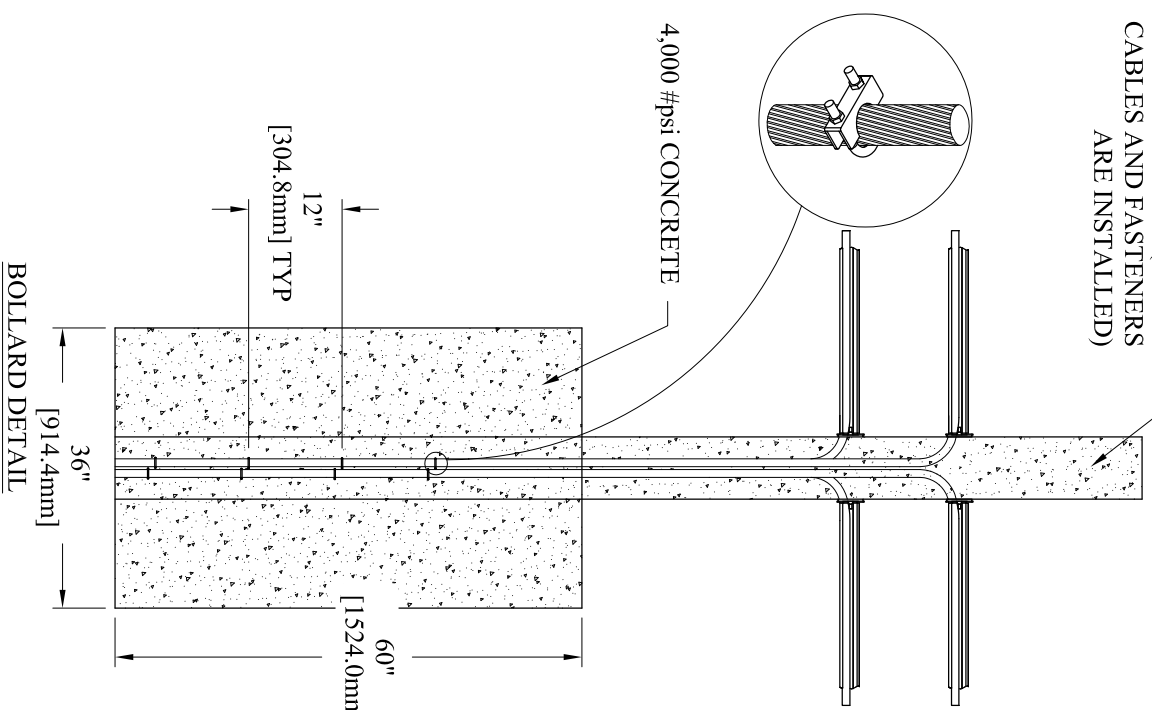
POST SPACING ELEVATION



THE PU50-P2 SYSTEMS HAVE BEEN ENGINEERED TO COMPLY WITH THE IMPACT CONDITIONS AND PENETRATION DISTANCES SPECIFIED IN THE ASTM F2656 CLASSIFICATIONS.

FILL WITH 4,000 #psi CONCRETE (AFTER CABLES AND FASTENERS ARE INSTALLED)

4,000 #psi CONCRETE



BOLLARD DETAIL

UNLESS NOTED OTHERWISE		PROPRIETARY INFORMATION		
x	Decimal	1/16	DO NOT SCALE	
.xxx	Decimal	1/32	OFF DRAWING	
.xxxx	Decimal	1/16	Angular 0.5°	
REVISION HISTORY		This drawing is the property of AMERISTAR. Titles, OK and must not be duplicated or used in whole or in part for the making of drawings, prints or plans to the information contained hereon.		
REV	ECN	AUTHOR	DATE	DESCRIPTION
C		KMc	05/05/2015	ADDED MM, PUT ON NEW PAGE LAYOUT
AMERISTAR 1555 N. Mingo Tulsa, OK 74116 1-888-933-9422 www.ameristarinc.com				
TITLE: STALWART PU50 P2 POST AND RAIL			DATE: 05/05/2015	SHEET: 1 of 1
DRAWING NO: SPR-PS02WR			DRN BY: KMc	REV: C