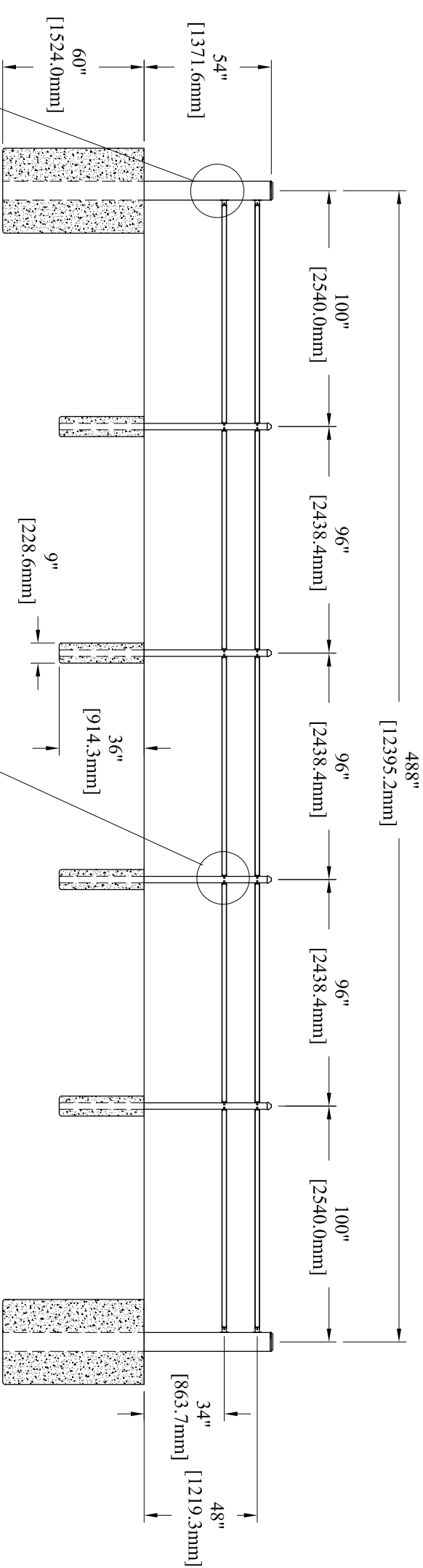
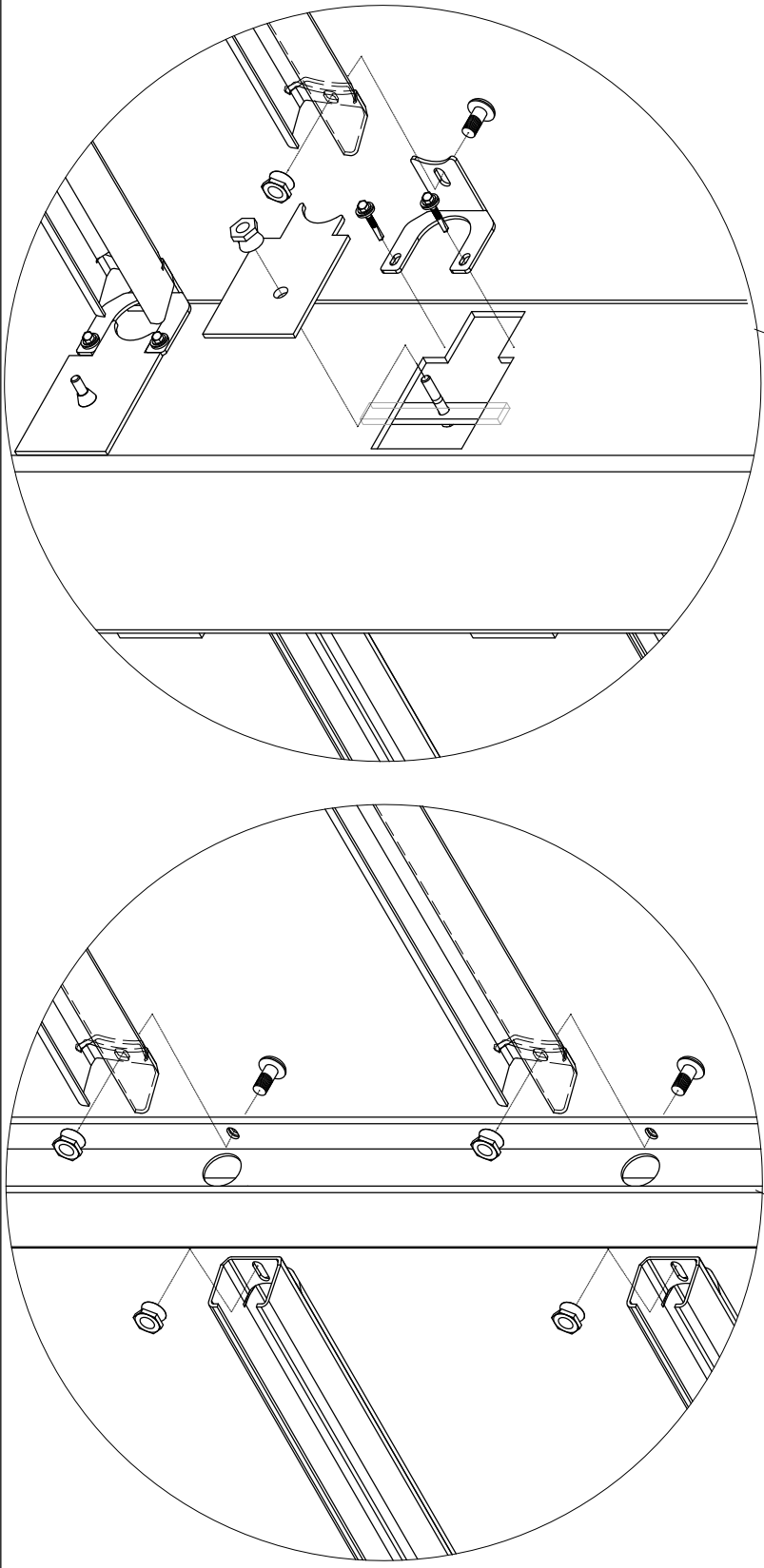


CABLE RUN ELEVATION

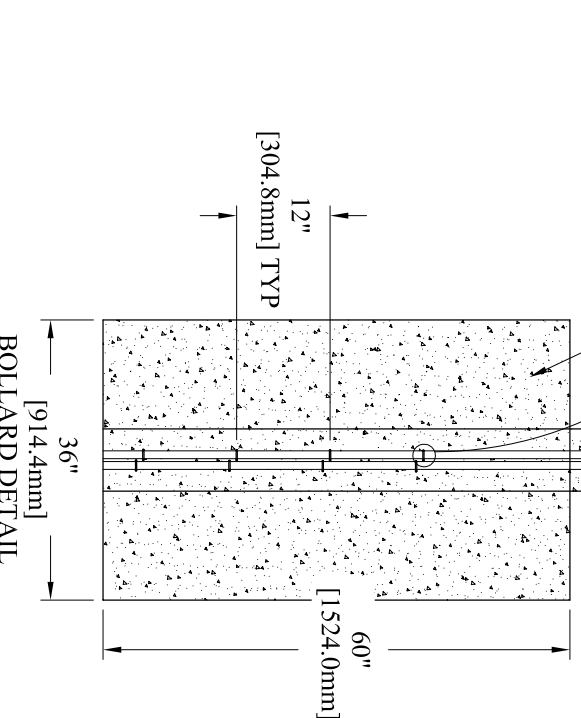


POST SPACING ELEVATION



FILL WITH 4,000 #psi CONCRETE (AFTER CABLES AND FASTENERS ARE INSTALLED)

4,000 #psi CONCRETE



BOLLARD DETAIL

THE M30-P2 SYSTEMS HAVE BEEN ENGINEERED TO COMPLY WITH THE IMPACT CONDITIONS AND PENETRATION DISTANCES SPECIFIED IN THE ASTM F2656 CLASSIFICATIONS.

Unless Noted Otherwise

Decimal	: 1/10	DO NOT SCALE	This drawing is the proprietary property of AMERISTAR. Titles, OK, and must not be duplicated or used in whole or in part for the making of drawings, prints or plans to the extent that they are not the property of AMERISTAR. All rights reserved.
Angular	: 1/10	OFF DRAWING	the information contained confidential.
Angular	: 0.5°		

PROPRIETARY INFORMATION

REV	ECN	AUTHOR	DATE	DESCRIPTION
C		KMc	05/04/2015	ADDED MM, PUT ON NEW PAGE LAYOUT

TITLE:	STALWART M30-P2 POST AND RAIL
DATE:	05/05/2015
DRN BY:	KMc
DRAWING NO.:	SPR-M302WR
SHEET:	1 of 1
REV:	C

AMERISTAR®  
1555 N. Mingo  
Tulsa, OK 74116  
1-888-933-9422  
www.ameristarinc.com